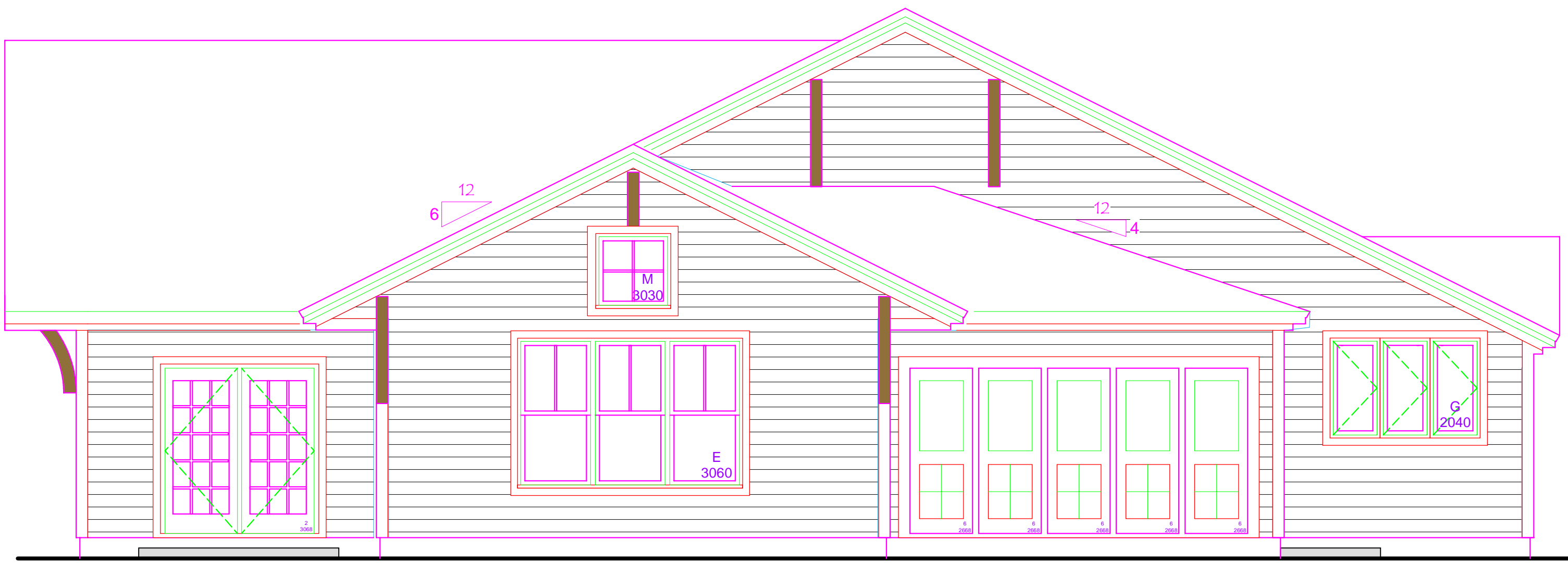


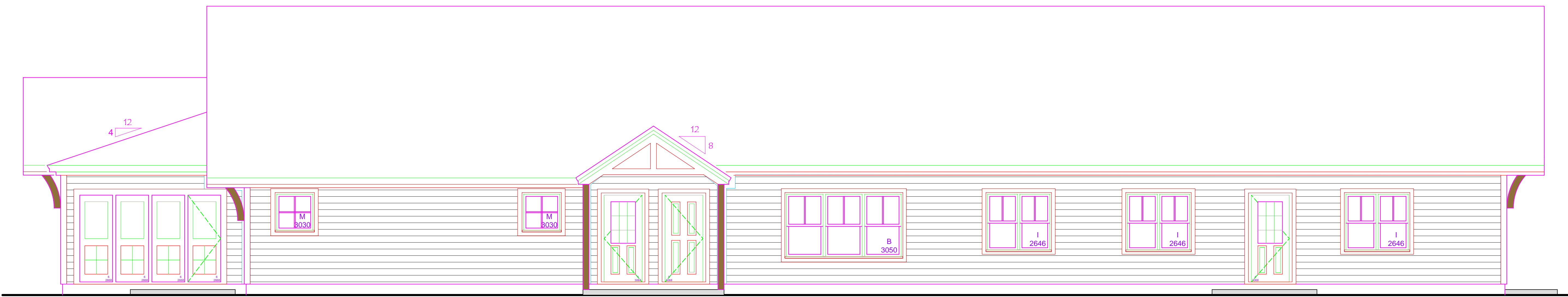
1 SOUTH ELEVATION
A-3 Scale: 1/4" = 1'-0"



2 WEST ELEVATION
A-3 Scale: 1/4" = 1'-0"



3 EAST ELEVATION
A-3 Scale: 1/4" = 1'-0"



4 NORTH ELEVATION
A-3 Scale: 1/4" = 1'-0"

ELEVATIONS - COMMON HOUSE